

State of Wyoming Corner Record

(In compliance with the CORNER PERPETUATION AND FILING ACT, Wyoming Statutes, 2013 Section 33-29-901 through 33-29-910, and the Rules and Regulations of the Board of Professional Engineers and Professional Land Surveyors)

Reverse side of this form may be used if more space is needed.

Record of original survey and citation of source of historical information (if corner is lost or obliterated). Description of corner monumentation evidence found and/or monument and accessories established to perpetuate the location of this corner. Sketch of relative location of monument, accessories, and reference points with course and distance to adjacent corner(s) (if determined in this survey). Method and rationale for reestablishment of lost or obliterated corner.

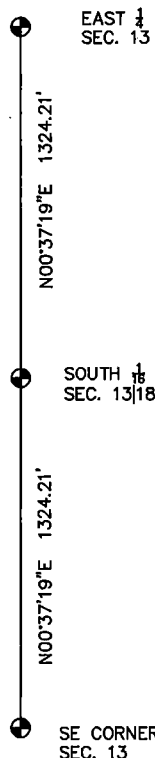
RECORD:
UNKNOWN.

MONUMENT FOUND:
NOTHING FOUND

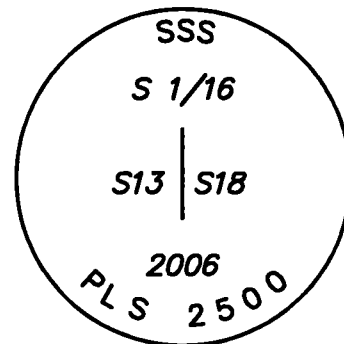
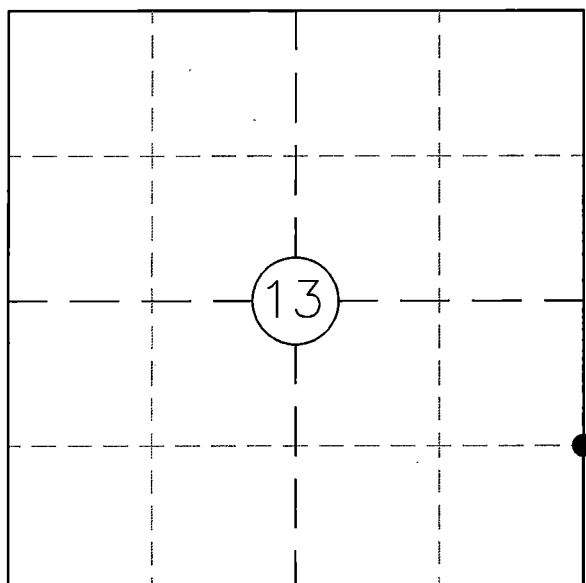
MONUMENT SET:
A $\frac{5}{8}$ "X24" REBAR WITH A $2\frac{1}{2}$ " ALUMINUM CAP DOWN 0.4' BELOW SURFACE OF COUNTY ROAD 206 WITH THE CAP STAMPED AS SHOWN.

REFERENCES:

MONUMENT LIES 7' WEST OF THE EAST EDGE OF COUNTY ROAD 148. NO REFERENCES AVAILABLE



Monument location



Monument Inscription

Date of Field Work: 06/22/06

Office Reference: 06248

Cross Index Plat

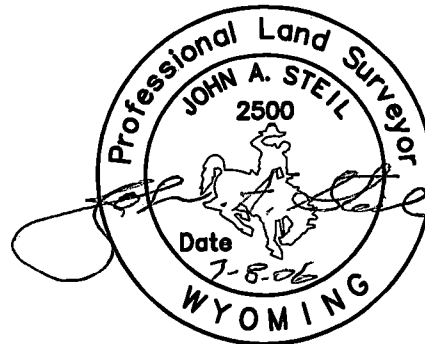
	1	2	3	4	5	6	7	8	9	10	11	12	13	14	15	16	17	18	19	20	21	22	23	24	25		
A																											A
B																											B
C			6			5				4				3					2						1	C	
D																										D	
E																										E	
F																										F	
G				7			8			9			10			11			12							G	
H																										H	
J																										J	
K																										K	
L																										L	
M																										M	
N																										N	
O																										O	
P																										P	
Q																										Q	
R																										R	
S																										S	
T																										T	
U																										U	
V																										V	
W																										W	
X																										X	
Y																										Y	
Z																										Z	
	1	2	3	4	5	6	7	8	9	10	11	12	13	14	15	16	17	18	19	20	21	22	23	24	25		

Firm/Agency, Address

STEIL SURVEYING SERVICES, LLC
1102 WEST 19TH STREET
CHEYENNE, WY 82001
(307) 634-7273

This corner record was prepared by me or under my direction and supervision.

SEAL & SIGNATURE



RECP #: 768305
RECORDED 12/26/2019 AT 1:40 PM BK# 2653 PG# 279
Debra K. Lee, CLERK OF LARAMIE COUNTY, WY PAGE 1 OF 1

Corner Name South $\frac{1}{16}$ Corner Section 13|18, T 13 N, R 63 W, 6th P.M. Cross-Index No.: M-25.

WBPEPLS/PLSW: March 1994; PLSW January 1998, January 2019

County: LARAMIE